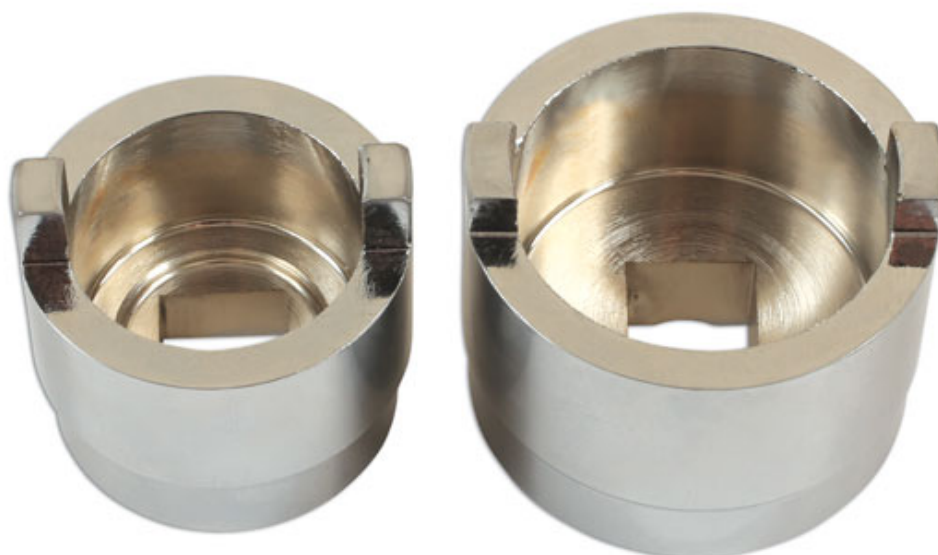


## Swinging Arm Service Set 2pc - for Triumph

1/2"D, 2 toothed swing arm socket set for tightening/loosening swing arm nuts.



### Additional Information

- Applications: Triumph Daytona 955i (2002 - 2006), Sprint RS (2002 - 2004).
- For double sided swinging arm.
- Swinging arm clamp: 38mm diameter (inner socket); swinging arm lock ring: 46mm diameter (outer socket).
- For servicing and replacement.
- 

<http://lasertools.co.uk/product/6172>

